

## COMPANY PROFILE



New Commercial Construction  
- Pohle Ave, Terrace BC



New Institutional Construction  
- Admin Building, New Aiyansh BC

Suite 4 - 5008 Pohle Avenue  
Terrace, BC V8G 4S8

Phone 250.635.7459  
Fax 250.635.6484

[www.pvlgroup.com](http://www.pvlgroup.com)



Major Commercial Expansion  
- Terrace / Kitimat Airport

## OUR INTRODUCTION



Perhaps the greatest testament to Progressive Ventures Construction Ltd.s quality and service is the fact that 60% of our business is done with repeat consultants and customers.

Established in 1973, our distinguished history spans 37 plus years. The company has a solid reputation of stability and integrity in Northwest British Columbia.

“Progressive” is a fully bonded General Contractor with expertise in all types of construction including:

- Design/Build
- Public Tender
- Project Management
- Construction Management
- Cost Plus Contracts

Our mission is to continue to be the leading General Contractor in Northwest British Columbia by providing unsurpassed quality work “**on time and on budget**”. We have and always will strive to meet and/or exceed the expectations of our Clients to ensure complete satisfaction with everyone we serve.

Sincerely,

A handwritten signature in black ink, appearing to read "Darcy McKeown".

Darcy McKeown, President  
**PROGRESSIVE VENTURES CONSTRUCTION LTD.**

# OUR TEAM

## Owners

Darcy McKeown, President  
David and Lael McKeown, Directors and principals

## Project Managers

Michael Gull, A.Sc.T.  
Robert (Bob) York

## Senior Superintendent

James Colongard

## Business Management

Khalie Genereaux, BA, Dipl. Comm., Business Manager  
Val Gauvin, MBA, Business Manager  
Heidi von Niederhausern, Accounting Department

The Progressive Ventures Construction team provides comprehensive know-how in commercial, industrial, and institutional construction and management. Combined they have over 100 years of practical experience in all facets of the industry due to diverse backgrounds both in the office and in the field.

Progressive Ventures Construction encourages and supports employees with continuing education including safety courses for all supervisory and management personnel, Gold Seal Management Certification and ongoing construction management courses to assure they are abreast of industry changes and technology.

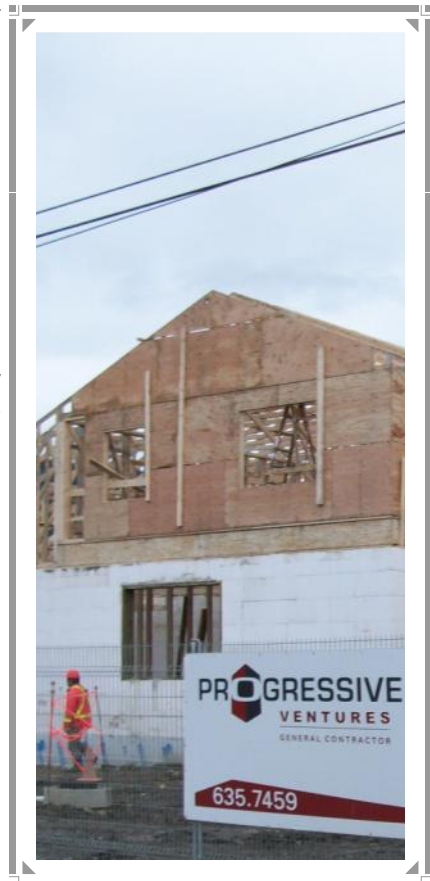
Progressive Ventures employs fully certified carpenters and are proud to have carpenter apprentices registered with ITA for their journeyman carpenter designation.

## SAFETY

We believe strongly in safety. Our Safety Program includes comprehensive safety manuals, daily safety meetings, regular safety inspections, and ongoing staff training in first aid and project site safety. Our goal is to assure each and every employee leaves all our sites each day safe and sound. This effort has been recognized by the WCB recognized COR program.



We continue to expand and cultivate our skills so that Progressive Ventures Construction Ltd. has the diversity needed to meet all new projects.



# OUR EXTERNAL TEAM

## CONSULTANT

- Don White, Canadian Construction Institute Inc.

## BONDING AND INSURANCE

- Jardine Lloyd Thompson, Amanda Caverly, Vice President

## ACCOUNTANT

- Carlyle Shepherd & Co., Ernie Dusdal, CMA

## OUR MEMBERSHIPS

- Independent Contractors and Businesses Association
- Northern B.C. Construction Association
- Terrace & District Chamber of Commerce
- Kitimat Chamber of Commerce
- Association for Mineral Exploration British Columbia
- Gold Seal Certification – Canadian Construction Association
- Society of Management Accountants (L. McKeown; K.Genereaux)

## SOME OF OUR RECENT PROJECTS

### Copperside Foods

Commercial—New Construction, Retail

### Cedarland Tire

Commercial—Design Build Renovation

### Ksan House Society

LEED Gold Residential Facility

### MacCarthy GM; Thornhill Motors; Totem Ford; Chrysler

Commercial—Automotive Dealerships

### Pinkut Creek / Fisheries

Industrial—Small Dam Construction

### Skeena Valley Golf & Country Club

Commercial—New Construction

### Woverine Mine

Mining—Concrete Construction

### Workers Compensation Board

Institutional—Renovation



### Ksan House Society

- \* Residence / Community  
Emergency Shelter
- \* LEED Gold New  
Construction